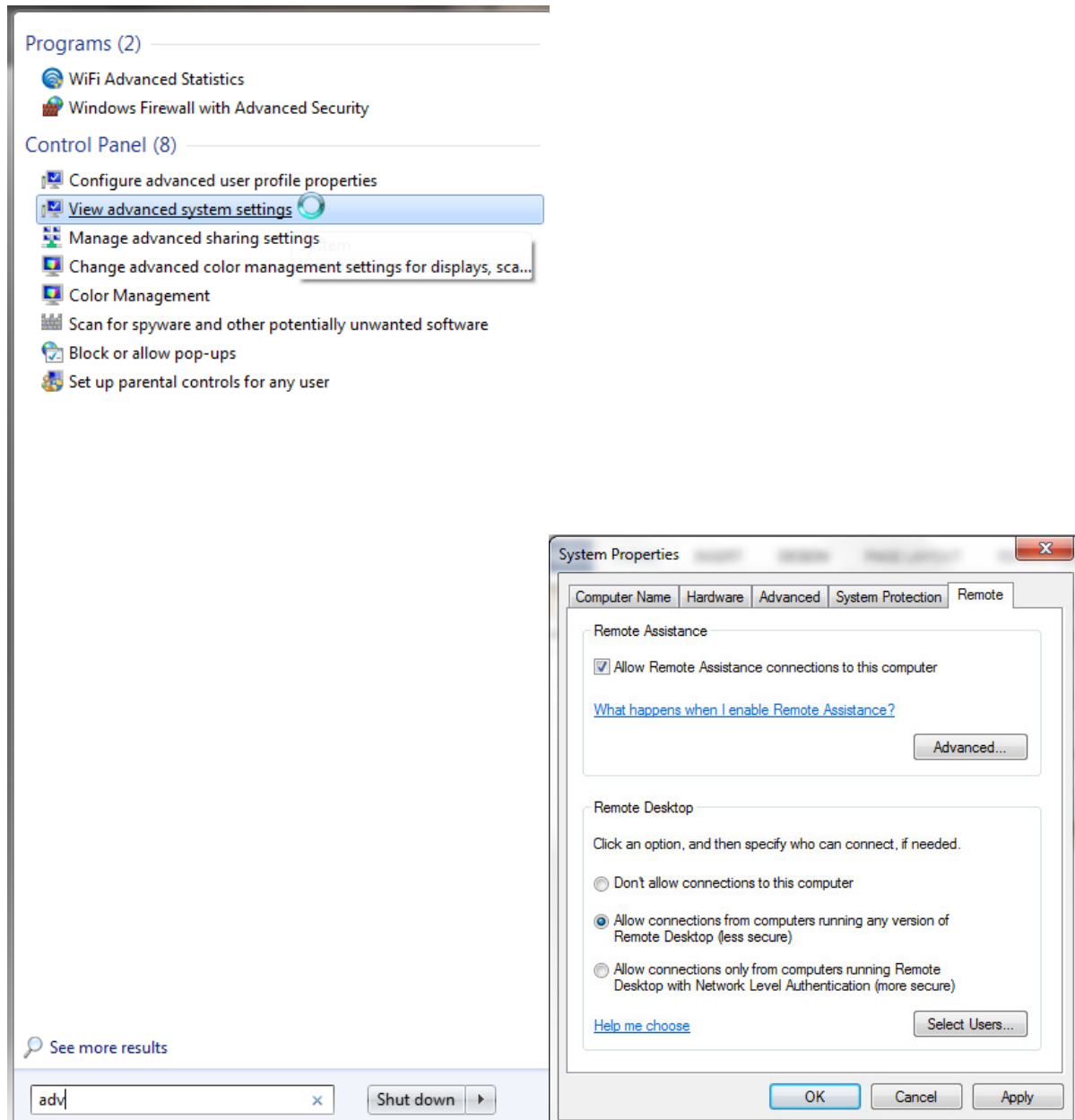


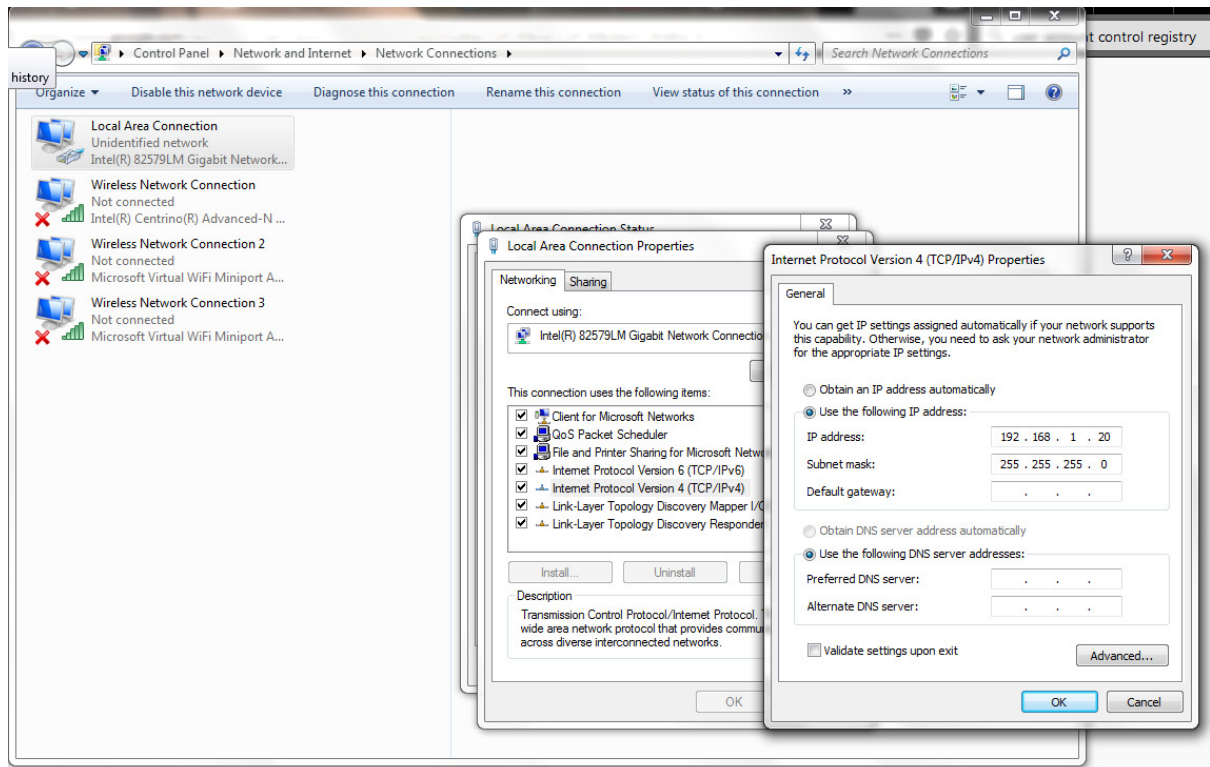
Remote AAA Start Stop

Instructions

On target machine go to Control panel System Remote settings and under “Remote desktop” set to “Allow remote connections to this computer”



To configure Ethernet connection between two machines use crossover Ethernet cable. Then go to network settings and set the IP address of the machine. Do this for both PCs



Download PSTools <https://docs.microsoft.com/en-us/sysinternals/downloads/pstools>

Extract PSTools from zip file into folder in your Windows path or into a folder of your choosing and then add this folder to the Windows path or place them in the folder which is in your MATLAB or python path as appropriate.

IMPORTANT: On Target machine you must disable user account control otherwise you get **access denied** message.

<https://winaero.com/blog/how-to-turn-off-and-disable-uac-in-windows-10/>

Download Autohotkey executable from [materials.articulateinstruments.com/Scripts/AAA_Start_Stop_record.exe](https://www.articulateinstruments.com/Scripts/AAA_Start_Stop_record.exe)

This script makes sure that the AAA.exe application has the focus then sends an <F3> keystroke which starts recording or if recording is in progress it stops recording.

Run the following on the target machine:

AAA.exe (then select the project and the recording)

Run the following on Server PC:

Cmdkey /add:<target_IP_address> /user:<target_IP_address>\<user> /pass:<password>

Psexec [or PsExec64] \\<REMOTE PC NAME> -s -i "<path>\AAA_Start_Stop_record.exe"

Call the cmdkey command once.

Call the PsExec command to start AAA recording and call it again to stop.